

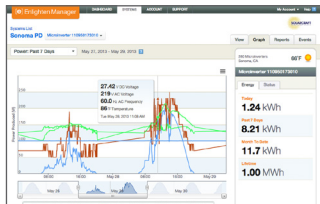
# Enlighten Manager

## For Solar Professionals

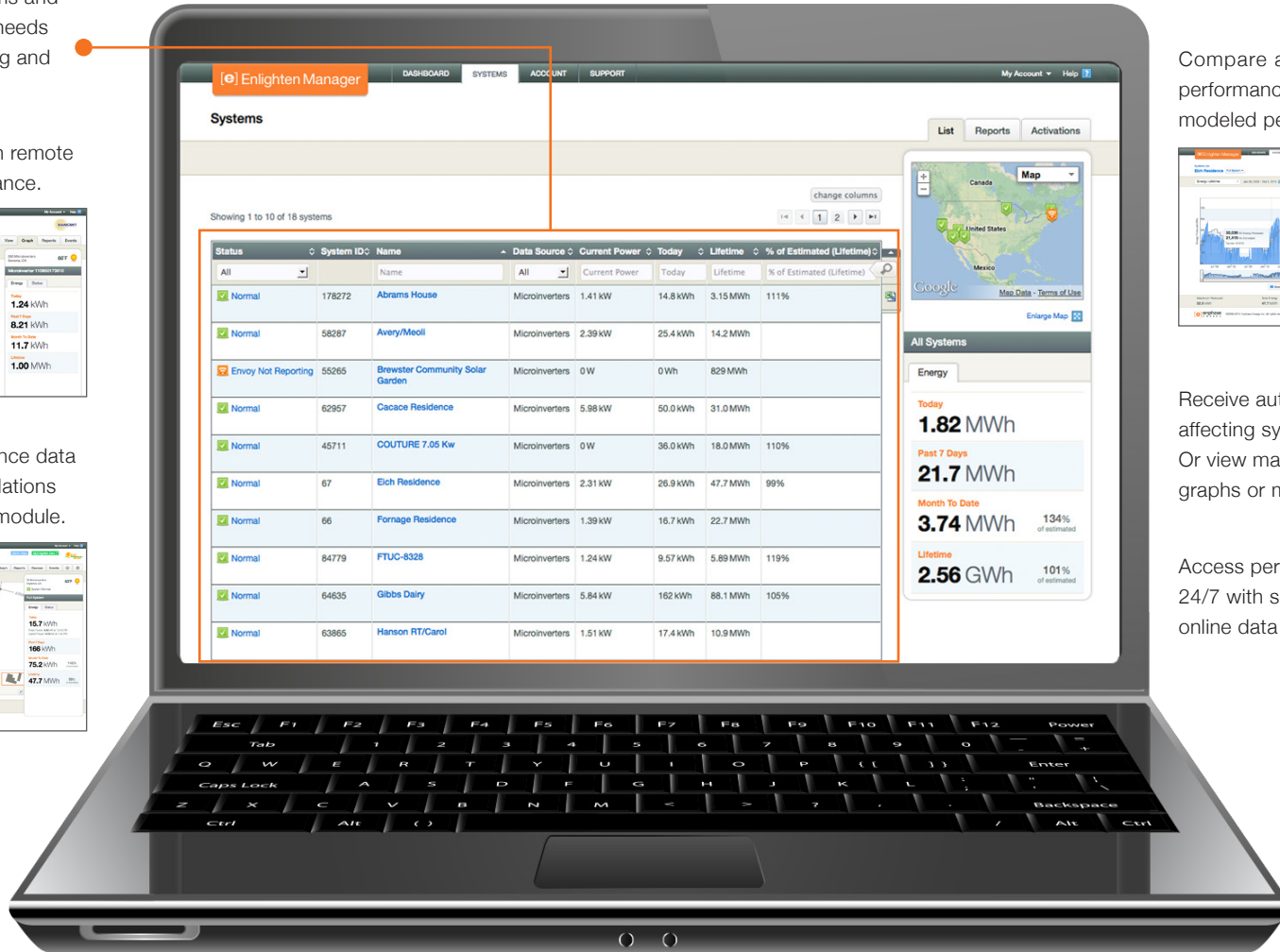
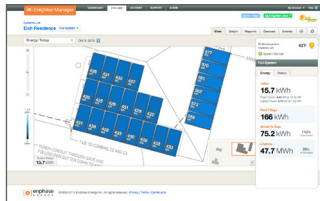
Designed for the solar professional, **Enlighten Manager** streamlines operations and maintenance processes and enables efficient management of multiple Enphase systems.

Manage multiple systems and prioritize maintenance needs with the dynamic sorting and filtering capabilities.

Minimize truck rolls with remote diagnosis and maintenance.



View detailed performance data from a fleet of PV installations down to the individual module.



Compare actual system performance against modeled performance data.



Receive automatic emails of events affecting system performance. Or view maintenance issues on graphs or maps.

Access performance reports 24/7 with secure, backed-up online data storage.

The Enlighten software platform provides solar professionals and system owners with **ongoing operations** and **uptime assurance**.

# MyEnlighten

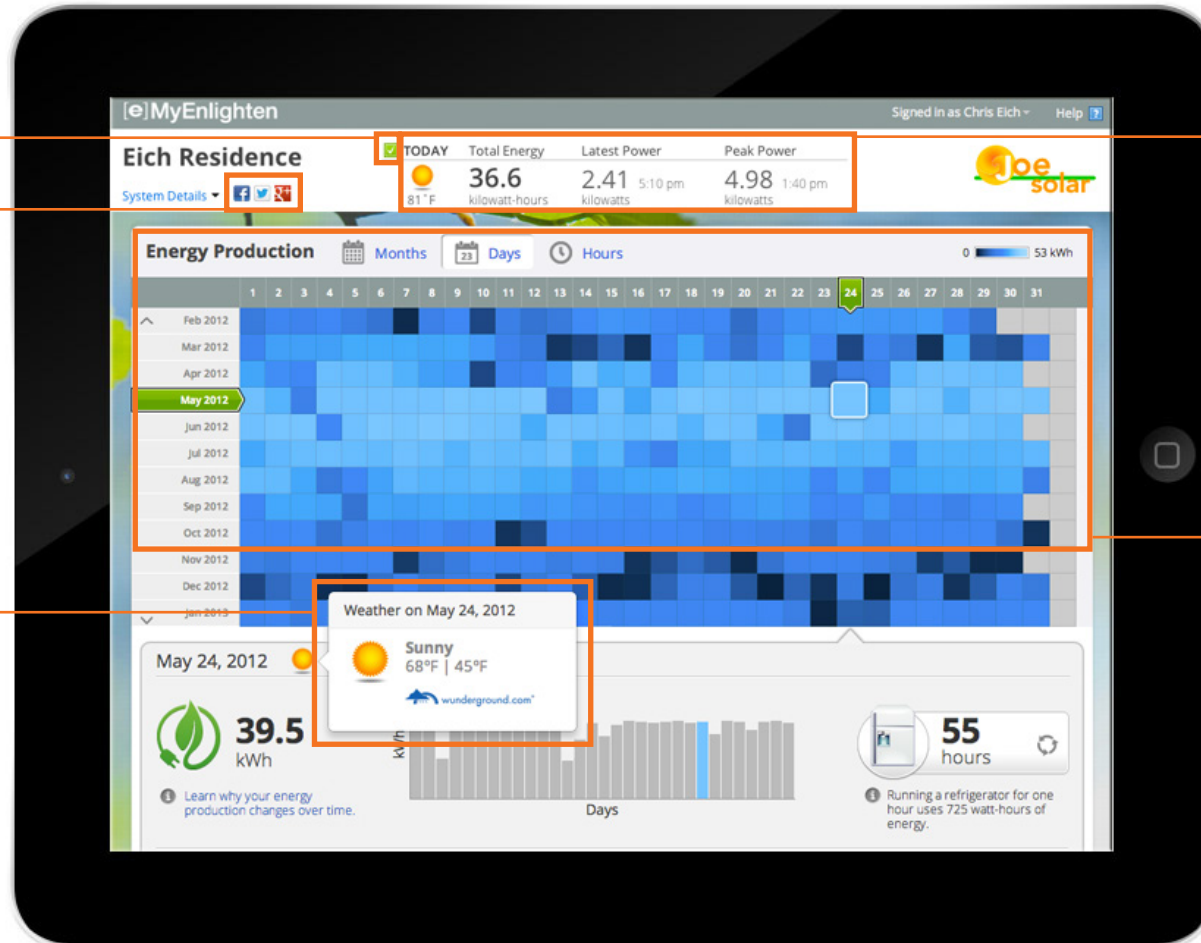
For System Owners

Designed for the system owner, **MyEnlighten** presents system energy production, overall health, historical performance, and energy equivalents. And it's all accessible on one simple, mobile-friendly display.

Confirm all is well with the System Status Indicator. If there's trouble, the Indicator shows the problem and provides troubleshooting tips.

Share easily using integrated social media buttons.

View historical weather data to understand variations in performance.



Verify today's performance at-a-glance.

View historical production data by days, months, or hours.