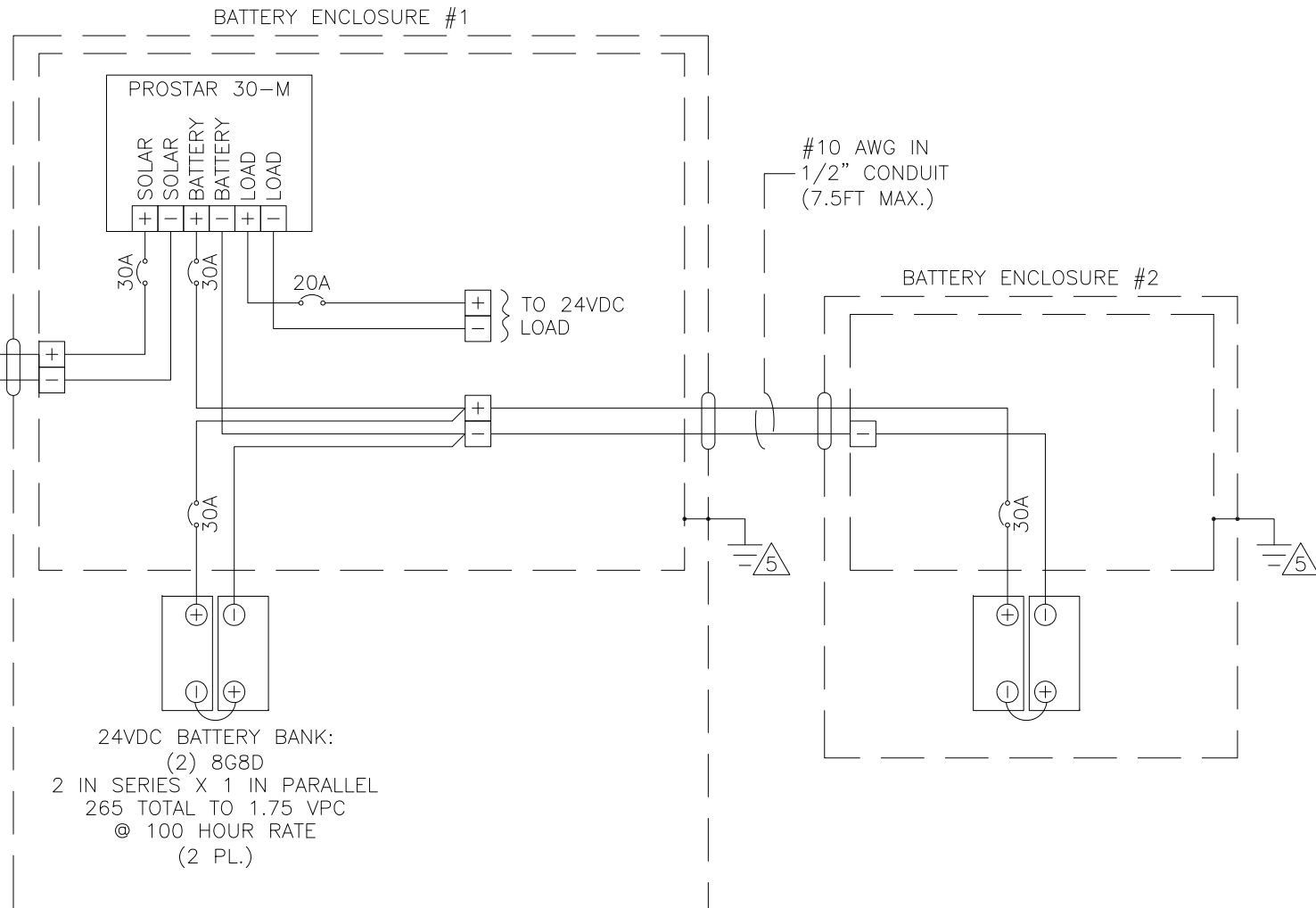
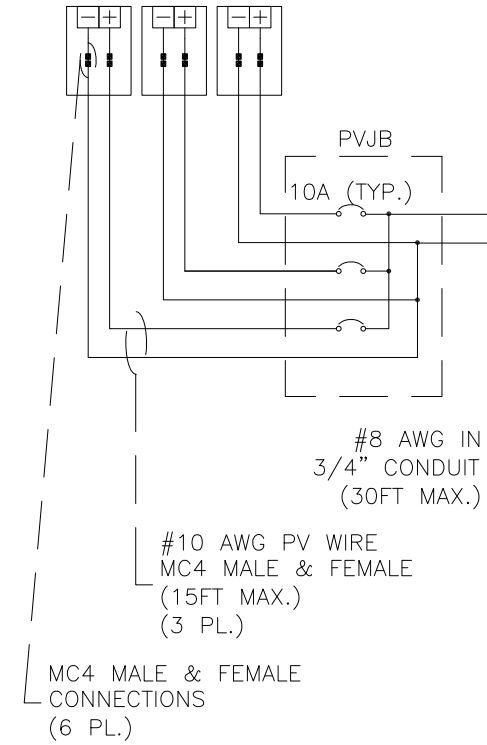


SOLAR ARRAY: 615W
 (3) SOLARTEC S72MC-205
 PHOTOVOLTAIC MODULES
 WIRED 3 IN PARALLEL
 16.38A @ 37.56VDC



24VDC BATTERY BANK:
 (2) 8G8D
 2 IN SERIES X 1 IN PARALLEL
 265 TOTAL TO 1.75 VPC
 @ 100 HOUR RATE
 (2 PL.)



OWNERSHIP

COPYRIGHT ©2017 THE ABOVE DRAWINGS, SPECIFICATIONS, IDEAS, DESIGNS, AND ARRANGEMENTS ARE AND SHALL REMAIN THE PROPERTY OF SOLAR ELECTRIC SUPPLY AND NO PART THEREOF SHALL BE COPIED, DISCLOSED TO OTHERS, OR USED IN CONNECTION WITH ANY WORK OR PROJECT OTHER THAN THE SPECIFIED PROJECT FOR WHICH THEY HAVE BEEN PREPARED AND DEVELOPED WITHOUT THE WRITTEN CONSENT OF SOLAR ELECTRIC SUPPLY. VISUAL CONTACT WITH THESE PLANS OR SPECIFICATIONS SHALL CONSTITUTE CONCLUSIVE EVIDENCE OF ACCEPTANCE OF THESE RESTRICTIONS.

WIRING DIAGRAM

MAPPS-525-530-24

APPROVALS	NAME	DATE
DRAWN	R. RALLO	04.JUN.14
APPROVED	S. GLIDDEN	15.MAY.17

DRAWING NUMBER

SD50-0277

B.O.M. NUMBER

SB50-0277

REVISIONS

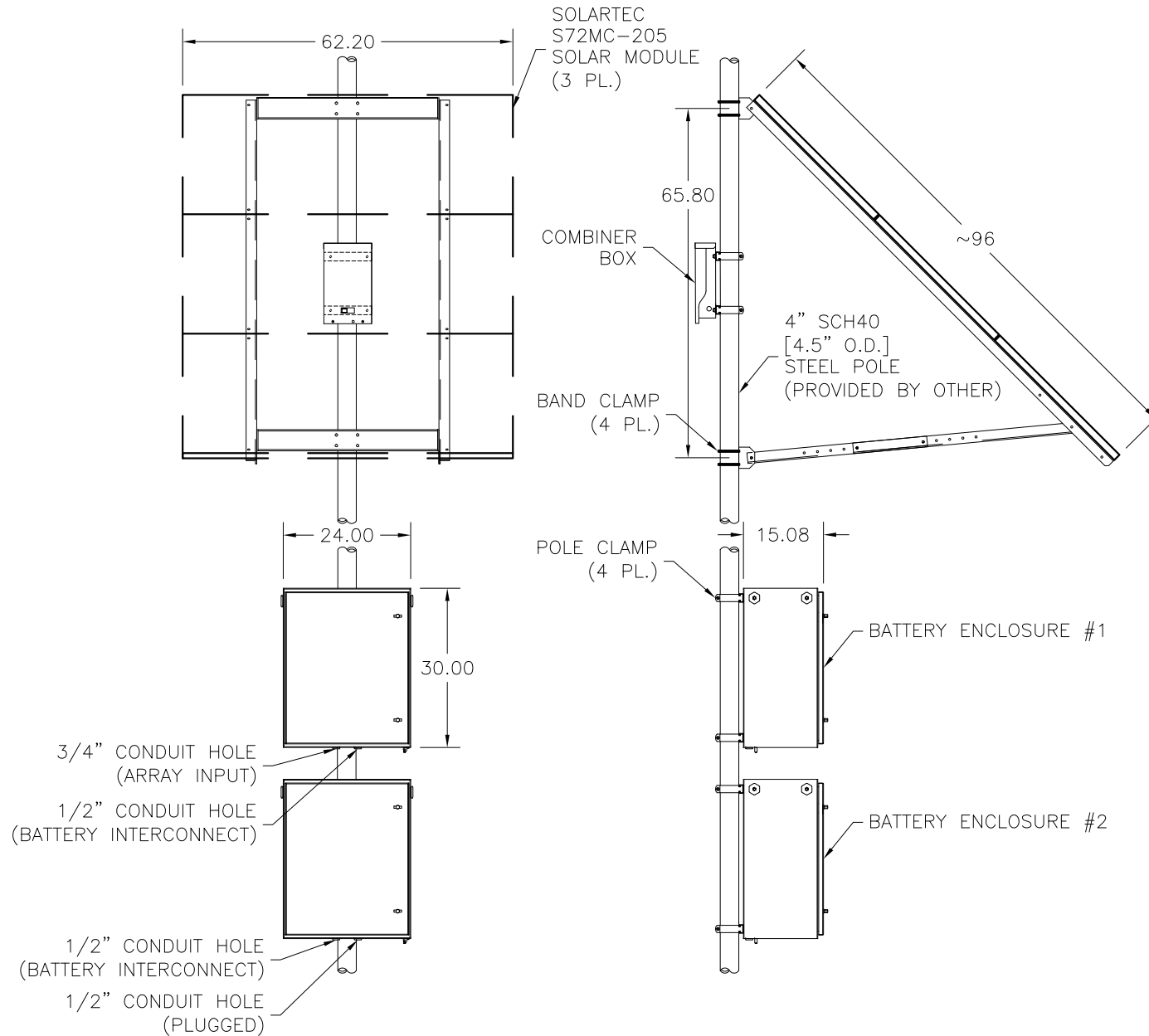
REV	REVISED BY	ORD	DATE
A	E. RIVAS	-	03JUN16
B	E. RIVAS	-	15MAY17

UNITS		TOLERANCES	
UNLESS OTHERWISE SPECIFIED:		0.0 ± -	
PRIMARY UNITS ARE: INCHES		0.00 ± -	
SECONDARY UNITS ARE: [mm]		0.000 ± -	
MISC	THIRD ANGLE PROJECTION	SIZE	
DRAWING SCALE		B	
N/A		SHEET 1 OF 4	

5. GROUND POINT ESTABLISHED BY CUSTOMER.
4. UNLESS OTHERWISE SPECIFIED, WIRING TO BE #10 RED POSITIVE (+), BLACK NEGATIVE (-), GREEN GROUND (⊥).
3. BATTERIES TO BE INSTALLED IN THE FIELD.
2. CONNECTIONS TO BATTERIES TO BE COMPLETED IN THE FIELD.
1. CONNECTIONS TO ARRAY TO BE COMPLETED IN THE FIELD.

NOTES:

PRINTED: 05.15.17 - 3:25 PM



1. STRUCTURE SHOWN AT 45DEG TILT.
NOTES:

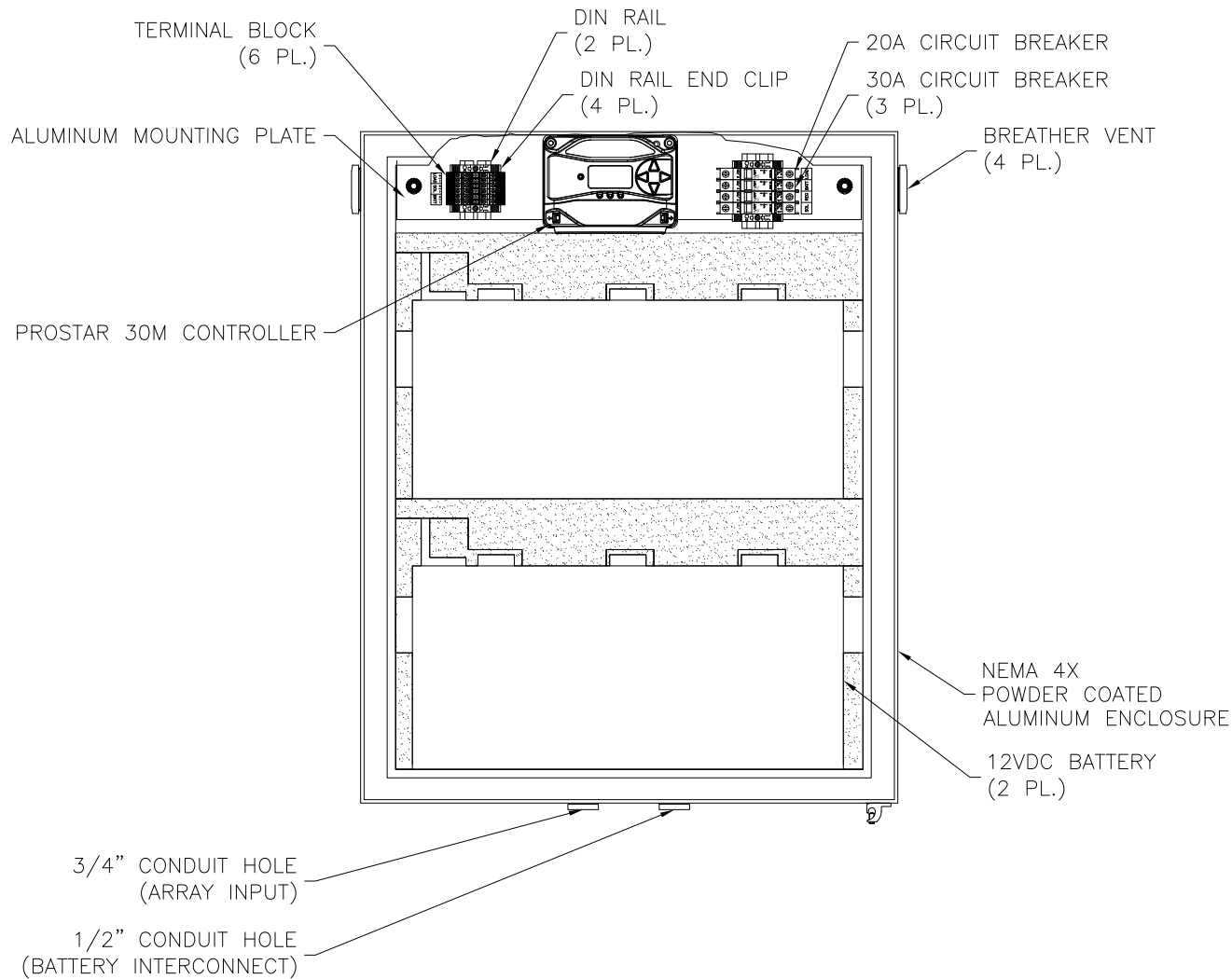


OWNERSHIP

COPYRIGHT ©2017 THE ABOVE DRAWINGS, SPECIFICATIONS, IDEAS, DESIGNS, AND ARRANGEMENTS ARE AND SHALL REMAIN THE PROPERTY OF SOLAR ELECTRIC SUPPLY AND NO PART THEREOF SHALL BE COPIED, DISCLOSED TO OTHERS, OR USED IN CONNECTION WITH ANY WORK OR PROJECT OTHER THAN THE SPECIFIED PROJECT FOR WHICH THEY HAVE BEEN PREPARED AND DEVELOPED WITHOUT THE WRITTEN CONSENT OF SOLAR ELECTRIC SUPPLY. VISUAL CONTACT WITH THESE PLANS OR SPECIFICATIONS SHALL CONSTITUTE CONCLUSIVE EVIDENCE OF ACCEPTANCE OF THESE RESTRICTIONS.

SITE LAYOUT		DATE	
MAPPS-525-530-24		04.JUN.14	
UNITS		APPROVALS NAME	
UNLESS OTHERWISE SPECIFIED: PRIMARY UNITS ARE: INCHES SECONDARY UNITS ARE: [mm]		DRAWN R. RALLO	
REVISIONS		APPROVED S. GLIDDEN	
REV	REVISED BY	DATE	
A	E. RIVAS	03JUN16	
B	E. RIVAS	15MAY17	
MISC			
SCALE	DRAWING NUMBER	SIZE	
N/A	SD50-0277	A	
	B.O.M. NUMBER		
	SB50-0277		
SHEET 2 OF 4			

PRINTED: 05.15.17 — 3:25 PM



2. BATTERY TO HAVE EXPANDED POLYSTYRENE FOAM INSULATION ON ALL SIDES AND DOOR.
 1. ENCLOSURE DOOR NOT SHOWN FOR CLARITY.
- NOTES:



OWNERSHIP

COPYRIGHT ©2017 THE ABOVE DRAWINGS, SPECIFICATIONS, IDEAS, DESIGNS, AND ARRANGEMENTS ARE AND SHALL REMAIN THE PROPERTY OF SOLAR ELECTRIC SUPPLY AND NO PART THEREOF SHALL BE COPIED, DISCLOSED TO OTHERS, OR USED IN CONNECTION WITH ANY WORK OR PROJECT OTHER THAN THE SPECIFIED PROJECT FOR WHICH THEY HAVE BEEN PREPARED AND DEVELOPED WITHOUT THE WRITTEN CONSENT OF SOLAR ELECTRIC SUPPLY. VISUAL CONTACT WITH THESE PLANS OR SPECIFICATIONS SHALL CONSTITUTE CONCLUSIVE EVIDENCE OF ACCEPTANCE OF THESE RESTRICTIONS.

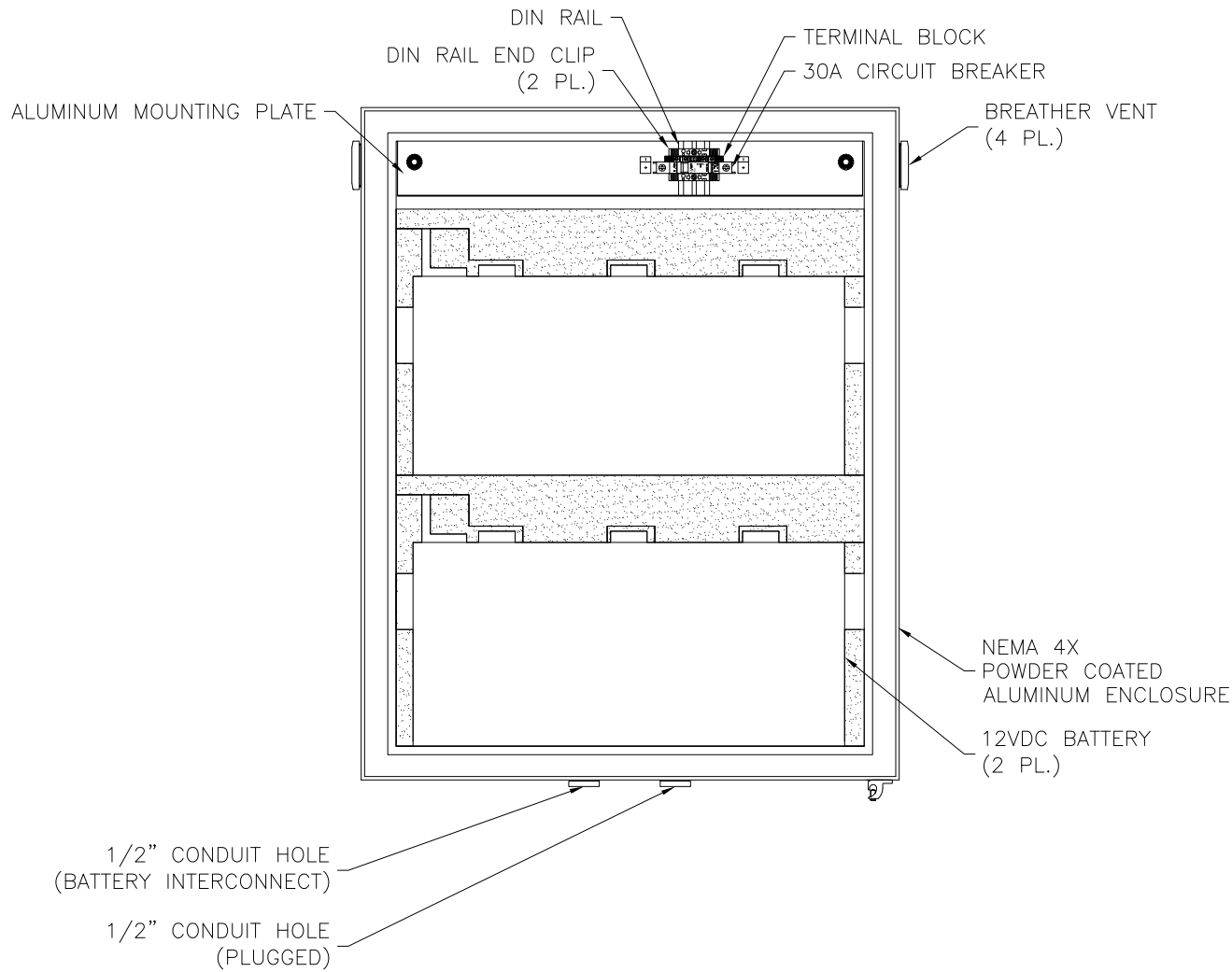
ENCLOSURE 1 LAYOUT
 MAPPS-525-530-24

UNITS
 UNLESS OTHERWISE SPECIFIED:
 PRIMARY UNITS ARE: INCHES
 SECONDARY UNITS ARE: [mm]

REVISIONS		
REV	REVISED BY	DATE
A	E. RIVAS	03JUN16
B	E. RIVAS	15MAY17

MISC

SCALE N/A	DRAWING NUMBER SD50-0277	APPROVALS NAME DRAWN R. RALLO APPROVED S. GLIDDEN	DATE 04.JUN.14
	B.O.M. NUMBER SB50-0277		DATE 15.MAY.17
	SHEET 3 OF 4		SIZE A



2. BATTERY TO HAVE EXPANDED POLYSTYRENE FOAM INSULATION ON ALL SIDES AND DOOR.
 1. ENCLOSURE DOOR NOT SHOWN FOR CLARITY.
- NOTES:



OWNERSHIP

COPYRIGHT ©2017 THE ABOVE DRAWINGS, SPECIFICATIONS, IDEAS, DESIGNS, AND ARRANGEMENTS ARE AND SHALL REMAIN THE PROPERTY OF SOLAR ELECTRIC SUPPLY AND NO PART THEREOF SHALL BE COPIED, DISCLOSED TO OTHERS, OR USED IN CONNECTION WITH ANY WORK OR PROJECT OTHER THAN THE SPECIFIED PROJECT FOR WHICH THEY HAVE BEEN PREPARED AND DEVELOPED WITHOUT THE WRITTEN CONSENT OF SOLAR ELECTRIC SUPPLY. VISUAL CONTACT WITH THESE PLANS OR SPECIFICATIONS SHALL CONSTITUTE CONCLUSIVE EVIDENCE OF ACCEPTANCE OF THESE RESTRICTIONS.

ENCLOSURE 2 LAYOUT
MAPPS-525-530-24

UNITS
UNLESS OTHERWISE SPECIFIED:
PRIMARY UNITS ARE: INCHES
SECONDARY UNITS ARE: [mm]

REVISIONS		
REV	REVISED BY	DATE
A	E. RIVAS	03JUN16
B	E. RIVAS	15MAY17

MISC

SCALE N/A	DRAWING NUMBER SD50-0277	APPROVALS NAME DRAWN R. RALLO APPROVED S. GLIDDEN	DATE 04.JUN.14
	B.O.M. NUMBER SB50-0277		DATE 15.MAY.17
	SHEET 4 OF 4		SIZE A