

SOLARSTACK[®] 101 FOR CONTRACTORS

MIAMI-DADE COUNTY
APPROVED

NOA No. 21-0520.05

► What is Solar Stack?

Solar Stack is the only solar panel mounting system that avoids all roof penetrations and damage while meeting the strictest building codes in North America.



► How does it work?

Solar Stack is attached to the roof membrane with spray polyurethane foam adhesive.



► Products



8" flush mounts (SS-8)



12" flush mounts (SS-12)



Tilt Mount, 5° slope (SS Tilt Kit)

 SOLARSTACK[®]



solarstack.com | 877-757-7822 | Contact us at info@solarstack.com



US PATENT No 8,104,231
US PATENT No 8,615,954
US PATENT No 9,315,999

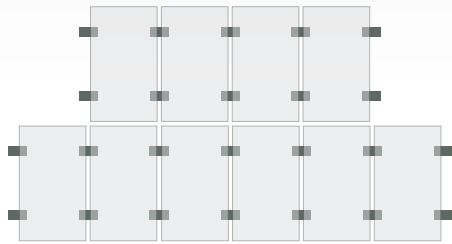
► How many Solar Stacks per panel?

Solar Stacks share in-between panels

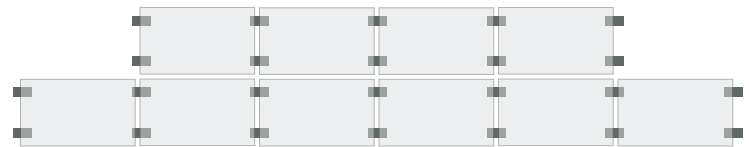
To find the exact amount of SS needed, take the amount of panels x 2 + the amount of rows x 2 = number of Solar Stacks required.

$$\begin{array}{r}
 \text{amount of panels} \quad \underline{10} \times 2 \quad \underline{20} \\
 + \\
 \text{the amount of rows} \quad \underline{2} \times 2 \quad \underline{4} \\
 = \\
 \text{Solar Stacks required} \quad \underline{24}
 \end{array}$$

NOTE: Calculation is same for either orientation.



Flush Mount (Portrait)



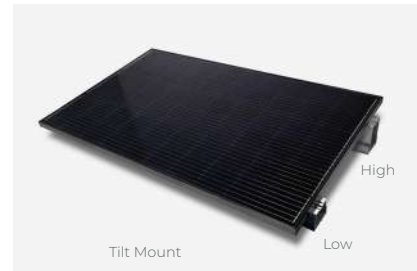
Tilt Mount (Landscape)



Flush Mount



Tilt Mount



Tilt Mount

► What orientation are panels mounted?

- Panels can be mounted in landscape or portrait with flush Solar Stack mounts.
- Panels **must be mounted in landscape** when using Solar Stack tilt mounts.



Flush Mount (Landscape)

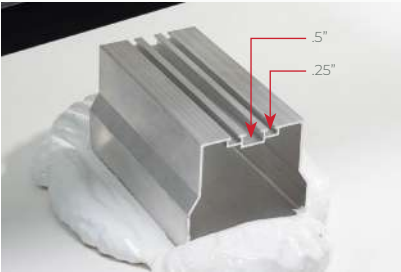


Tilt Mount (Landscape)



► How is Solar Stack attached to panels?

- Panels are attached directly to Solar Stack mounts. **Rails are not required.**
- Each Solar Stack has three mounting channels. Two .25" channels and one .5" channel. Clamps with a .25" t-bolt and .5" snapping clamps are compatible.
- Grounding hardware and micro-inverters can also be attached within these three channels.



► Foam

Each container weighs 38 lbs. It is preassembled and ready to use. Each container has enough adhesive to mount between (125-175 qty) SS-8 and SS Tilt Mounts, or (85-115 qty) SS-12.

TEMPERATURE GUIDELINES

- Chemical Storage Temperature | 50-100°F (10-38°C)
- Outside Application Temperature | 40-100°F (4-38°C)
- Internal Chemical Application Temperature | 70-90°F (21-32°C)
- Surface Application Temperature (Substrate) | 40-100°F (4-38°C)

**Internal chemical temperature must be at least 70°F when applying foam.
Store in temperatures 70°F or above during winter months.*

Once opened foam kits can be re-used but they have an expiration date of 30 days.

**Solar Stack should be installed by a Certified Solar Stack Installer. If you'd like to become a Certified Installer email or call us today!*

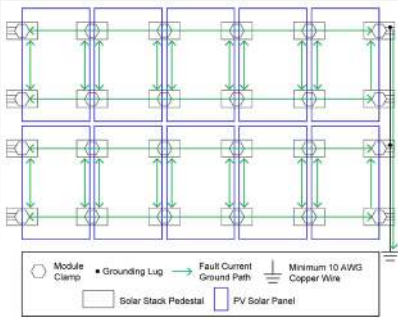
► Foam Primer

Adhesive primers must be applied to all single ply membranes (TPO, EPDM, PVC, etc.) after the roof has been cleaned and is dry. Please refer to our "coatings and primer" brochure for more information or email us at info@solarstack.com



► Grounding?

One grounding line is required per row of panels.



► Wire Management?

Wire management runs from micro inverter to micro inverter or wire management can be handled with wire clips on the under side of panels.



► Paint Foam

Each exposed Solar Stack (exposed to the sun, outside of array) must be coated with an outdoor acrylic paint for UV protection.



Solar Stack is the fastest and simplest installation system on the market

Training is recommended for any installation. Solar Stack offers hands-on and virtual training. Once trained, contractors are considered a Certified Solar Stack Installer. They will be featured on our website and will receive local leads.



solarstack.com | 877-757-7822 | Contact us at info@solarstack.com



US PATENT No 8,104,231
US PATENT No 8,613,354
US PATENT No 9,315,999