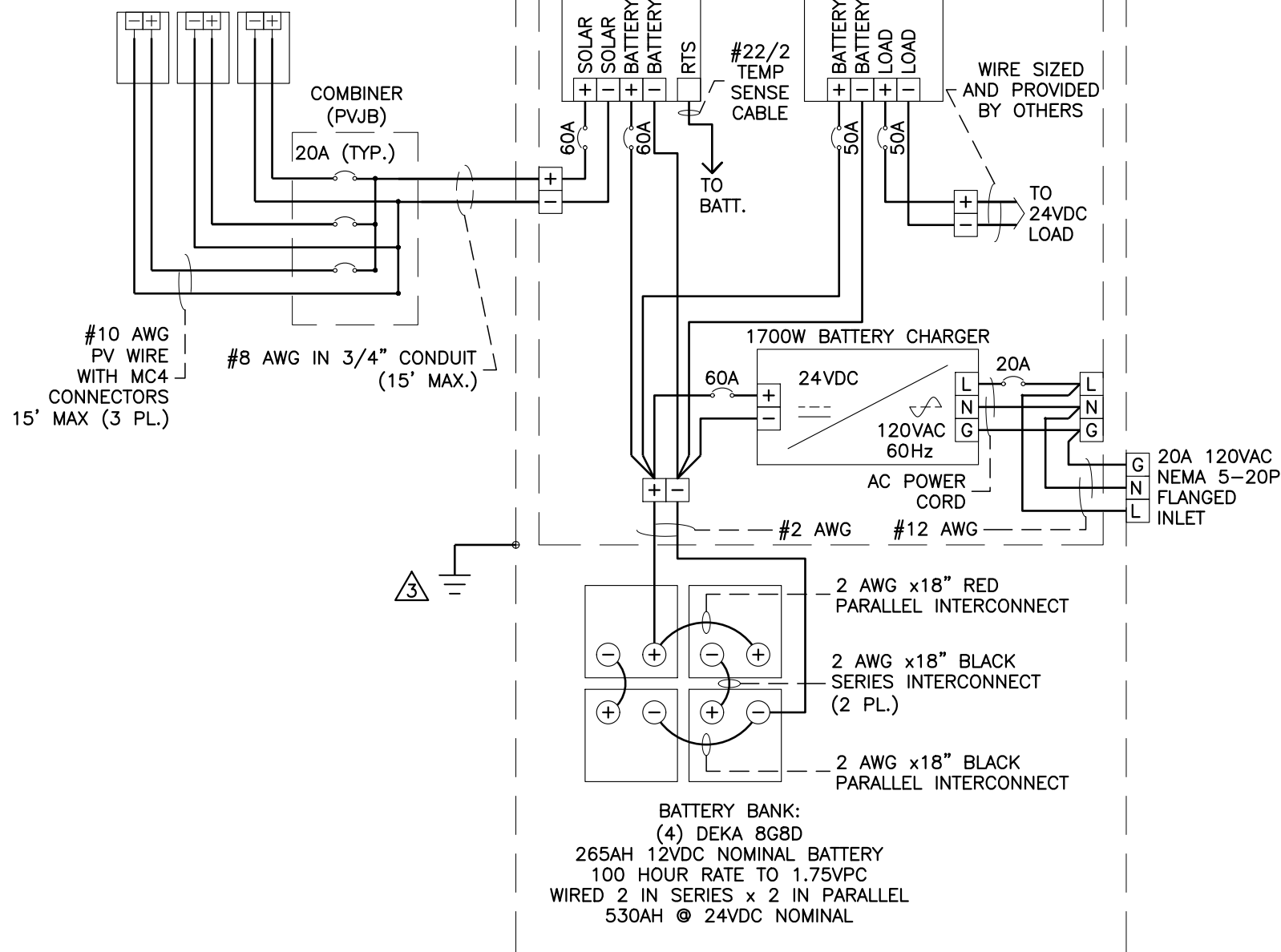


SOLAR ARRAY: 1200W  
(3) REC400NP3 PHOTOVOLTAIC MODULES  
WIRED 3 IN PARALLEL  
31.92A @ 37.6VDC



3. GROUND POINT ESTABLISHED BY CUSTOMER.
2. AC WIRING IS #12 AWG, BLACK: LINE/HOT (L), WHITE: NEUTRAL (N), GREEN: GROUND (G).
1. DC WIRING IS #6 AWG, RED: POSITIVE (+), BLACK: NEGATIVE (-), GREEN: GROUND (G).
- NOTES: UNLESS OTHERWISE SPECIFIED.

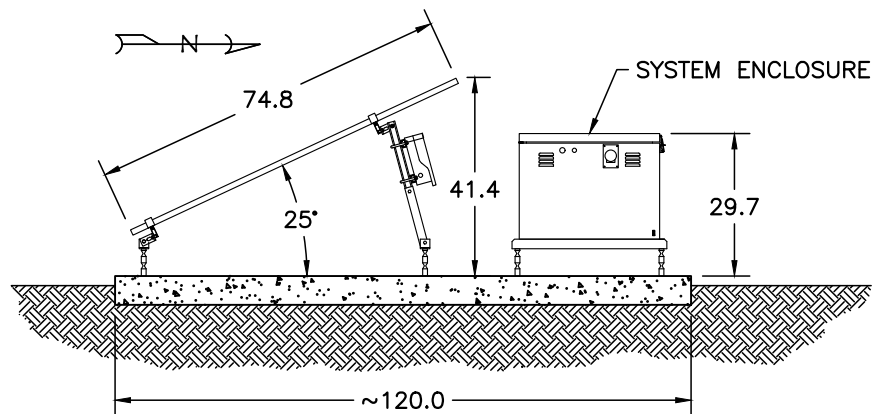
## OWNERSHIP

COPYRIGHT © 2024 THE ABOVE DRAWINGS, SPECIFICATIONS, IDEAS, DESIGNS, ARRANGEMENTS AND SHOWN HEREIN REMAIN THE PROPERTY OF SOLAR ELECTRIC SUPPLY AND NO PART THEREOF SHALL BE COPIED, DISCLOSED TO OTHERS, OR USED IN CONNECTION WITH ANY WORK OR PROJECT OTHER THAN THE SPECIFIED PROJECT FOR WHICH THEY HAVE BEEN PREPARED AND DEVELOPED WITHOUT THE WRITTEN CONSENT OF SOLAR ELECTRIC SUPPLY. VISUAL CONTACT WITH THESE PLANS OR SPECIFICATIONS SHALL CONSTITUTE CONCLUSIVE EVIDENCE OF ACCEPTANCE OF THESE RESTRICTIONS.

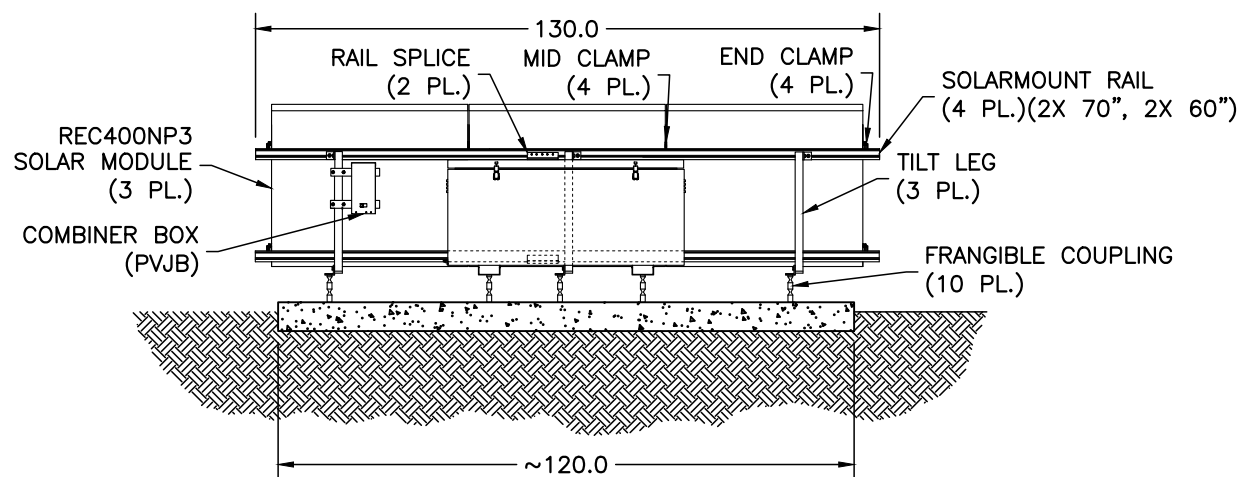
## WIRING DIAGRAM

MAPPS 1200-530-24-FC

UNITS			APPROVALS NAME DRAWN E. RIVAS APPROVED
UNLESS OTHERWISE SPECIFIED: PRIMARY UNITS ARE: INCHES SECONDARY UNITS ARE: [mm]			
REVISIONS			
REV	REVISED BY	DATE	
MISC			SIZE A
SCALE N/A	DRAWING NUMBER SD41-0287-SER		
	B.O.M. NUMBER		
	SB41-0287		
	SHEET 1	OF 4	



SIDE VIEW



REAR VIEW



OWNERSHIP

COPYRIGHT ©2024 THE ABOVE DRAWINGS, SPECIFICATIONS, IDEAS, DESIGNS, AND ARRANGEMENTS ARE AND SHALL REMAIN THE PROPERTY OF SOLAR ELECTRIC SUPPLY AND NO PART THEREOF SHALL BE COPIED, DISCLOSED TO OTHERS, OR USED IN CONNECTION WITH ANY WORK OR PROJECT OTHER THAN THE SPECIFIED PROJECT FOR WHICH THEY HAVE BEEN PREPARED AND DEVELOPED WITHOUT THE WRITTEN CONSENT OF SOLAR ELECTRIC SUPPLY. VISUAL CONTACT WITH THESE PLANS OR SPECIFICATIONS SHALL CONSTITUTE CONCLUSIVE EVIDENCE OF ACCEPTANCE OF THESE RESTRICTIONS.

SITE LAYOUT

MAPPS 1200-530-24-FC

UNITS  
UNLESS OTHERWISE SPECIFIED:  
PRIMARY UNITS ARE: INCHES  
SECONDARY UNITS ARE: [mm]

REVISIONS  
REV REVISED BY DATE

MISC

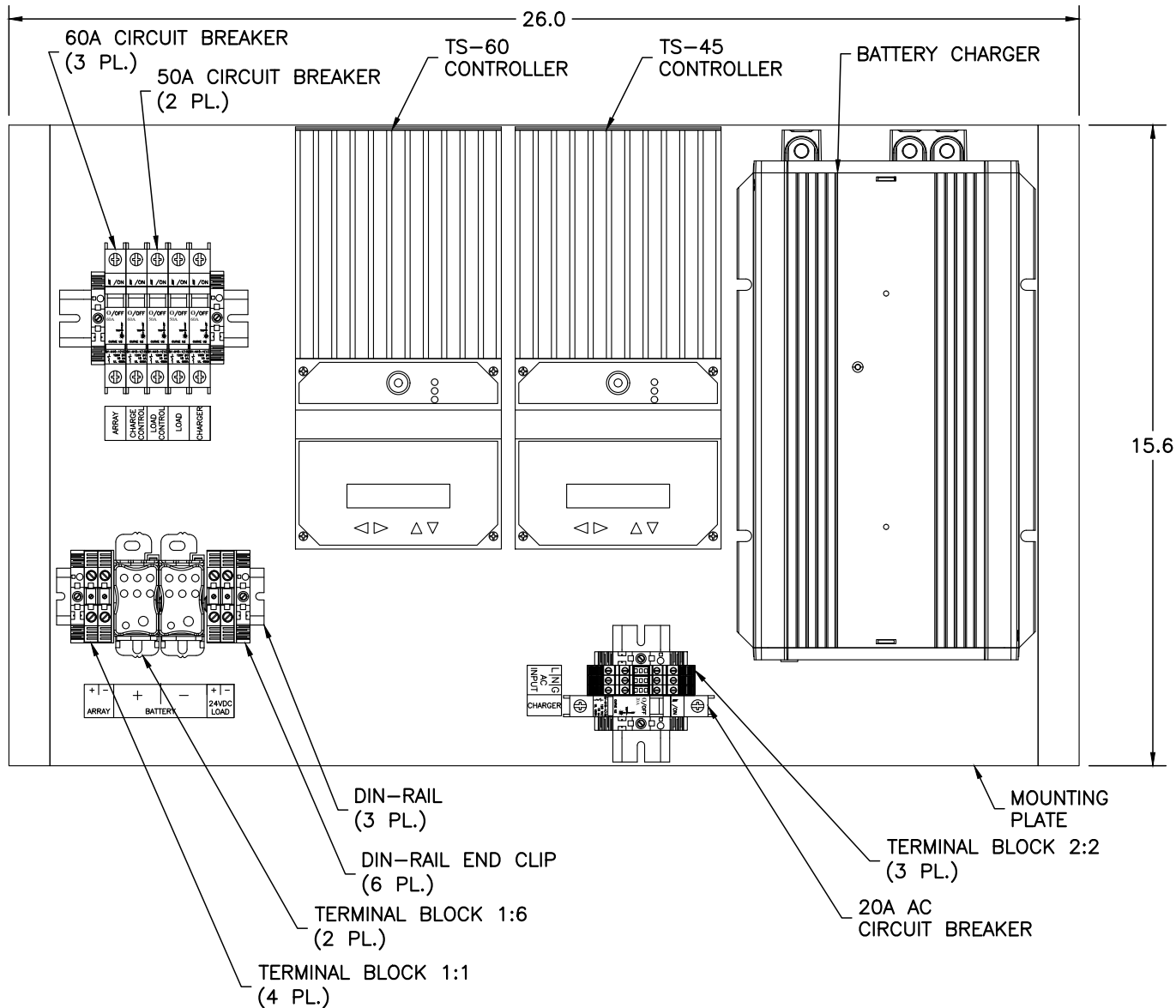
DRAWING NUMBER  
SD41-0287-SES

B.O.M. NUMBER  
SB41-0287

SHEET 2 OF 4

APPROVALS NAME DATE  
DRAWN E. RIVAS 02.JUL.24  
APPROVED -

SIZE  
A



#### OWNERSHIP

COPYRIGHT ©2024 THE ABOVE DRAWINGS, SPECIFICATIONS, IDEAS, DESIGNS, AND ARRANGEMENTS ARE AND SHALL REMAIN THE PROPERTY OF SOLAR ELECTRIC SUPPLY AND NO PART THEREOF SHALL BE COPIED, DISCLOSED TO OTHERS, OR USED IN CONNECTION WITH ANY WORK OR PROJECT OTHER THAN THE SPECIFIED PROJECT FOR WHICH THEY HAVE BEEN PREPARED AND DEVELOPED WITHOUT THE WRITTEN CONSENT OF SOLAR ELECTRIC SUPPLY. VISUAL CONTACT WITH THESE PLANS OR SPECIFICATIONS SHALL CONSTITUTE CONCLUSIVE EVIDENCE OF ACCEPTANCE OF THESE RESTRICTIONS.

#### COMPONENT LAYOUT

MAPPS 1200-530-24-FC

UNLESS OTHERWISE SPECIFIED:  
PRIMARY UNITS ARE: INCHES  
SECONDARY UNITS ARE: [mm]

REVISIONS

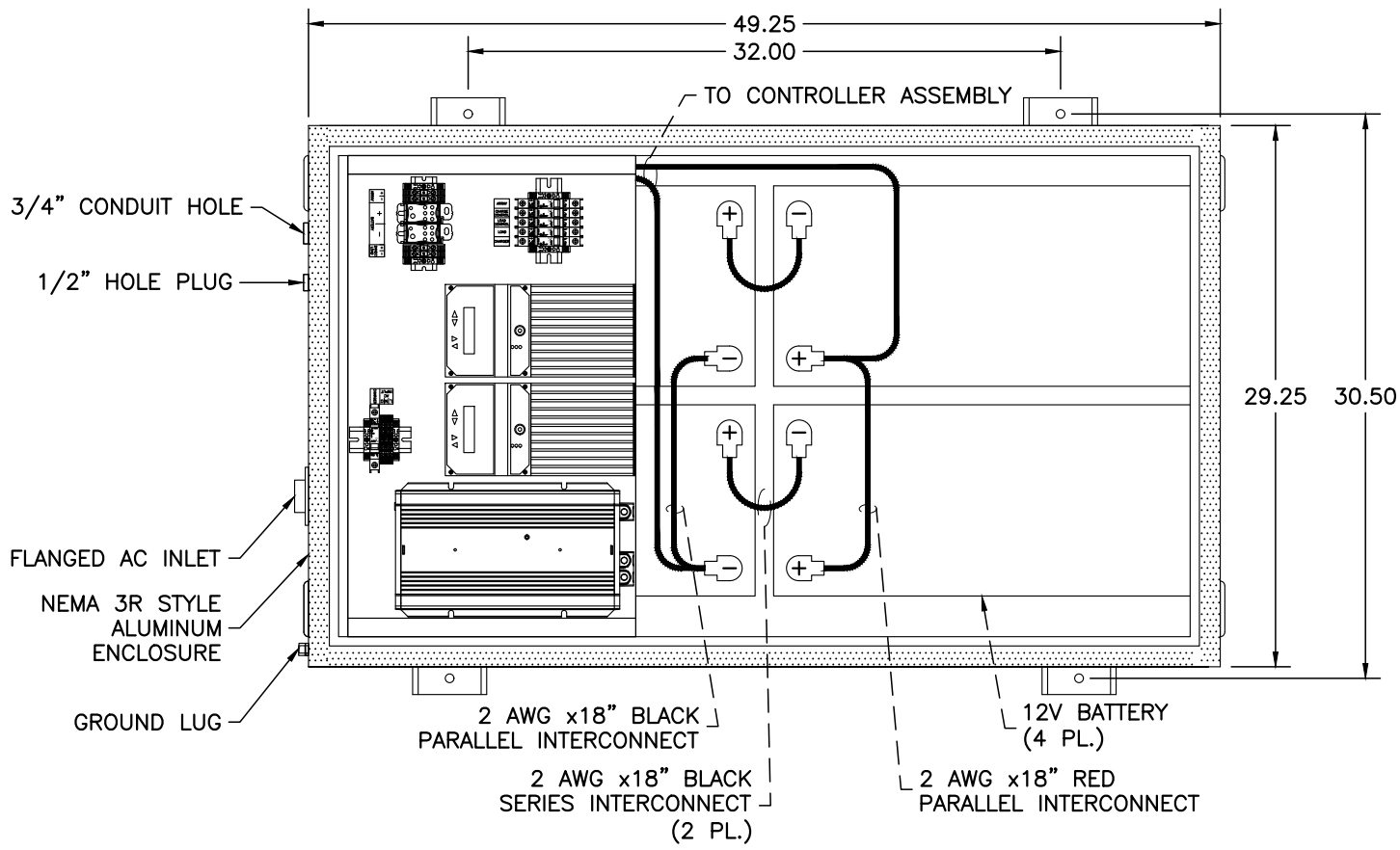
REV	REVISED BY	DATE

MISC

SCALE	DRAWING NUMBER	DATE
N/A	SD41-0287-SES	02.JUL.24
	B.O.M. NUMBER	
	SB41-0287	
	SHEET 3 OF 4	

APPROVALS	NAME	DATE
DRAWN	E. RIVAS	02.JUL.24
APPROVED		

SIZE  
A



OWNERSHIP

COPYRIGHT ©2024 THE ABOVE DRAWINGS, SPECIFICATIONS, IDEAS, DESIGNS, AND ARRANGEMENTS ARE AND SHALL REMAIN THE PROPERTY OF SOLAR ELECTRIC SUPPLY AND NO PART THEREOF SHALL BE COPIED, DISCLOSED TO OTHERS, OR USED IN CONNECTION WITH ANY WORK OR PROJECT OTHER THAN THE SPECIFIED PROJECT FOR WHICH THEY HAVE BEEN PREPARED AND DEVELOPED WITHOUT THE WRITTEN CONSENT OF SOLAR ELECTRIC SUPPLY. VISUAL CONTACT WITH THESE PLANS OR SPECIFICATIONS SHALL CONSTITUTE CONCLUSIVE EVIDENCE OF ACCEPTANCE OF THESE RESTRICTIONS.

BATTERY LAYOUT

MAPPS 1200-530-24-FC

UNITS  
UNLESS OTHERWISE SPECIFIED:  
PRIMARY UNITS ARE: INCHES  
SECONDARY UNITS ARE: [mm]

REVISIONS  
REV REVISED BY DATE

MISC

DRAWING NUMBER  
SD41-0287-SES  
B.O.M. NUMBER  
SB41-0287  
SHEET 4 OF 4

APPROVALS NAME DATE  
DRAWN E. RIVAS 02.JUL.24  
APPROVED -  
SIZE  
A