

- NOTES:
1. CONNECTIONS TO ARRAY TO BE COMPLETED IN THE FIELD.
  2. CONNECTIONS TO BATTERIES TO BE COMPLETED IN THE FIELD.
  3. BATTERIES TO BE INSTALLED IN THE FIELD.
  4. UNLESS OTHERWISE SPECIFIED, WIRING TO BE #10 RED POSITIVE (+), BLACK NEGATIVE (-), GREEN GROUND ( $\perp$ ).
  5. GROUND POINT ESTABLISHED BY CUSTOMER.



#### OWNERSHIP

COPYRIGHT ©2024 THE ABOVE DRAWINGS, SPECIFICATIONS, IDEAS, DESIGNS, AND ARRANGEMENTS ARE AND SHALL REMAIN THE PROPERTY OF SOLAR ELECTRIC SUPPLY AND NO PART THEREOF SHALL BE COPIED, DISCLOSED TO OTHERS, OR USED IN CONNECTION WITH ANY WORK OR PROJECT OTHER THAN THE SPECIFIED PROJECT FOR WHICH THEY HAVE BEEN PREPARED AND DEVELOPED WITHOUT THE WRITTEN CONSENT OF SOLAR ELECTRIC SUPPLY. VISUAL CONTACT WITH THESE PLANS OR SPECIFICATIONS SHALL CONSTITUTE CONCLUSIVE EVIDENCE OF ACCEPTANCE OF THESE RESTRICTIONS.

#### WIRING DIAGRAM

MAPPS 800-530-24-120

APPROVALS	NAME	DATE
DRAWN	E. RIVAS	28.FEB.24
APPROVED	-	-

#### DRAWING NUMBER

SD50-0633-SES

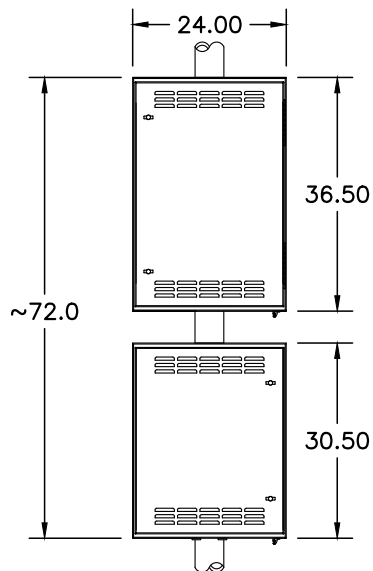
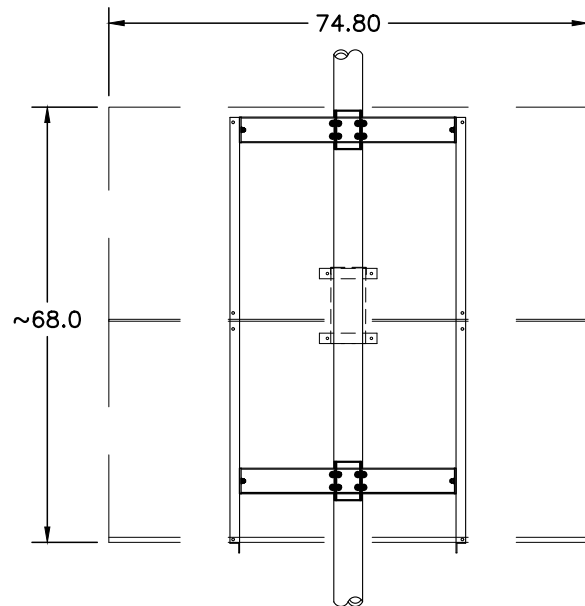
#### B.O.M. NUMBER

SB50-0633

#### REVISIONS

REV	REVISED BY	ORD	DATE
-----	------------	-----	------

UNITS		TOLERANCES	
UNLESS OTHERWISE SPECIFIED:		0.0 ± -	
PRIMARY UNITS ARE: INCHES		0.00 ± -	
SECONDARY UNITS ARE: [mm]		0.000 ± -	
MISC	THIRD ANGLE PROJECTION	SIZE	
DRAWING SCALE		B	
N/A	SHEET 1 OF 5		



REC400NP3  
SOLAR  
MODULE  
(2 PL.)

4" SCH40  
[4.5" O.D.]  
STEEL POLE  
(PROVIDED BY  
OTHERS)

COMBINER  
BOX

~82.1

POLE CLAMP  
(6 PL.)

15.58

ARRAY CONDUIT

BATTERY ENCLOSURE #1

ENCLOSURE/BATTERY  
INTERCONNECT

BATTERY ENCLOSURE #2



#### OWNERSHIP

COPYRIGHT ©2024 THE ABOVE DRAWINGS, SPECIFICATIONS, IDEAS, DESIGNS, AND ARRANGEMENTS ARE AND SHALL REMAIN THE PROPERTY OF SOLAR ELECTRIC SUPPLY AND NO PART THEREOF SHALL BE COPIED, DISCLOSED TO OTHERS, OR USED IN CONNECTION WITH ANY WORK OR PROJECT OTHER THAN THE SPECIFIED PROJECT FOR WHICH THEY HAVE BEEN PREPARED AND DEVELOPED WITHOUT THE WRITTEN CONSENT OF SOLAR ELECTRIC SUPPLY. VISUAL CONTACT WITH THESE PLANS OR SPECIFICATIONS SHALL CONSTITUTE CONCLUSIVE EVIDENCE OF ACCEPTANCE OF THESE RESTRICTIONS.

#### SITE LAYOUT

MAPPS 800-530-24-120

UNLESS OTHERWISE SPECIFIED:  
PRIMARY UNITS ARE: INCHES  
SECONDARY UNITS ARE: [mm]

REVISIONS

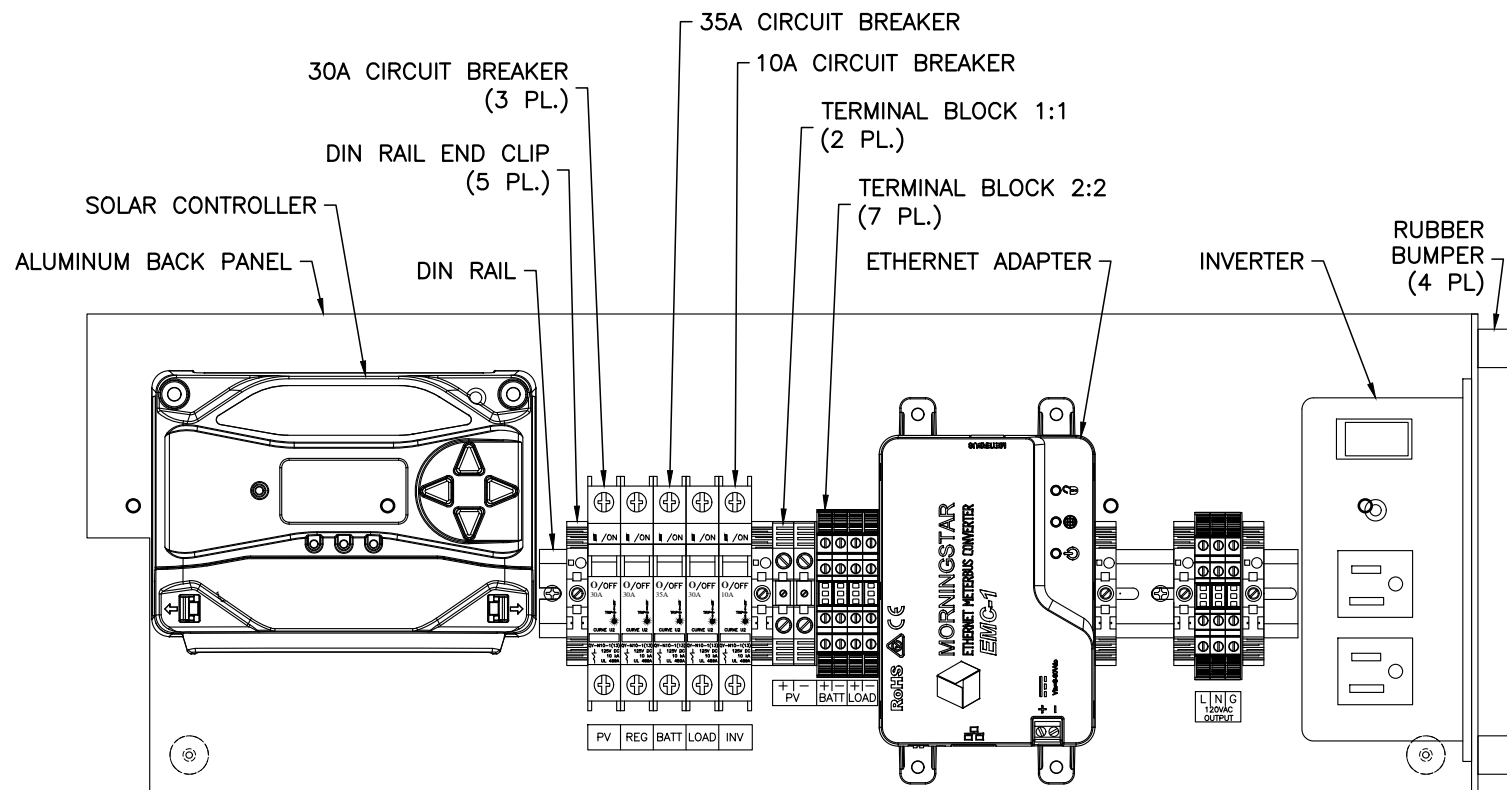
REV REVISED BY DATE

MISC

DRAWING NUMBER  
SD50-0633-SES  
B.O.M. NUMBER  
SB50-0633  
SHEET 2 OF 5

APPROVALS NAME DATE  
DRAWN E. RIVAS 28.FEB.24  
APPROVED -

SCALE  
N/A  
SIZE  
A



## OWNERSHIP

COPYRIGHT ©2024 THE ABOVE DRAWINGS, SPECIFICATIONS, IDEAS, DESIGNS, AND ARRANGEMENTS ARE RESERVED AND WILL REMAIN THE PROPERTY OF SOLAR ELECTRIC SUPPLY AND NO PART THEREOF SHALL BE COPIED, DISCLOSED TO OTHERS, OR USED IN CONNECTION WITH ANY WORK OR PROJECT OTHER THAN THE SPECIFIED PROJECT FOR WHICH THEY HAVE BEEN PREPARED AND DEVELOPED WITHOUT THE WRITTEN CONSENT OF SOLAR ELECTRIC SUPPLY. VISUAL CONTACT WITH THESE PLANS OR SPECIFICATIONS SHALL CONSTITUTE CONCLUSIVE EVIDENCE OF ACCEPTANCE OF THESE RESTRICTIONS.

## ENC.1 CONTROL LAYOUT

MAPPS 800-530-24-120

UNITS  
UNLESS OTHERWISE SPECIFIED:  
PRIMARY UNITS ARE: INCHES  
SECONDARY UNITS ARE: [mm]

REVISIONS	
1	Initial Design
2	Revised Design
3	Final Design

REV	REVISED BY	DATE
-----	------------	------

--	--	--	--

\_\_\_\_\_

[illegible]

	MISC
--	------

\_\_\_\_\_

	DRAWING NUMBER
--	----------------

SD50-0633-SE

FILE	/A	B.O.M. NUMBER
------	----	---------------

SB50-0633

SHEET 3 OF 5

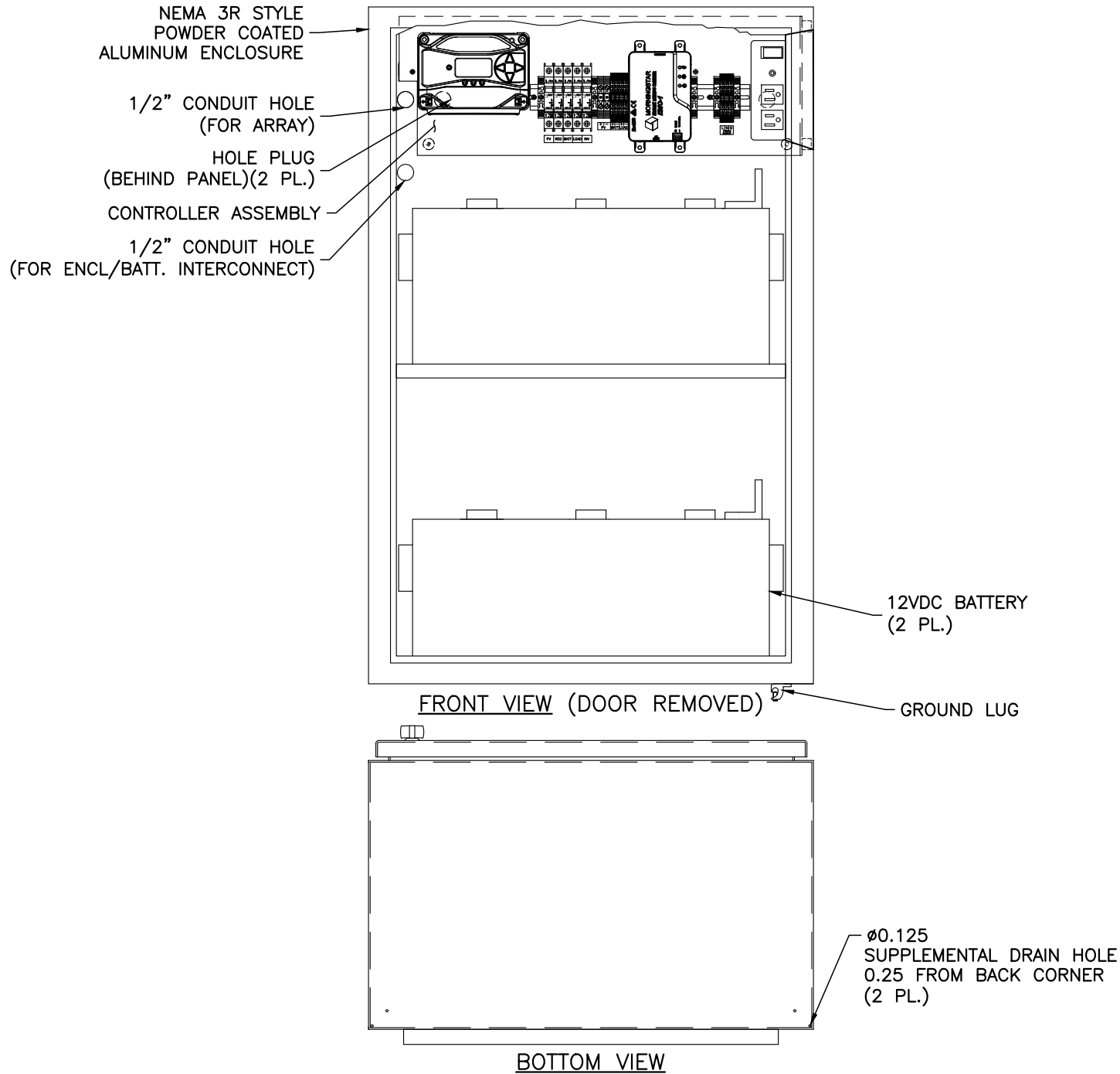
[illegible]

APPROVALS	NAME	DATE
DRAWN	E. RIVAS	28.FEB.24
APPROVED		

	A	
S	SIZE	
	A	



—

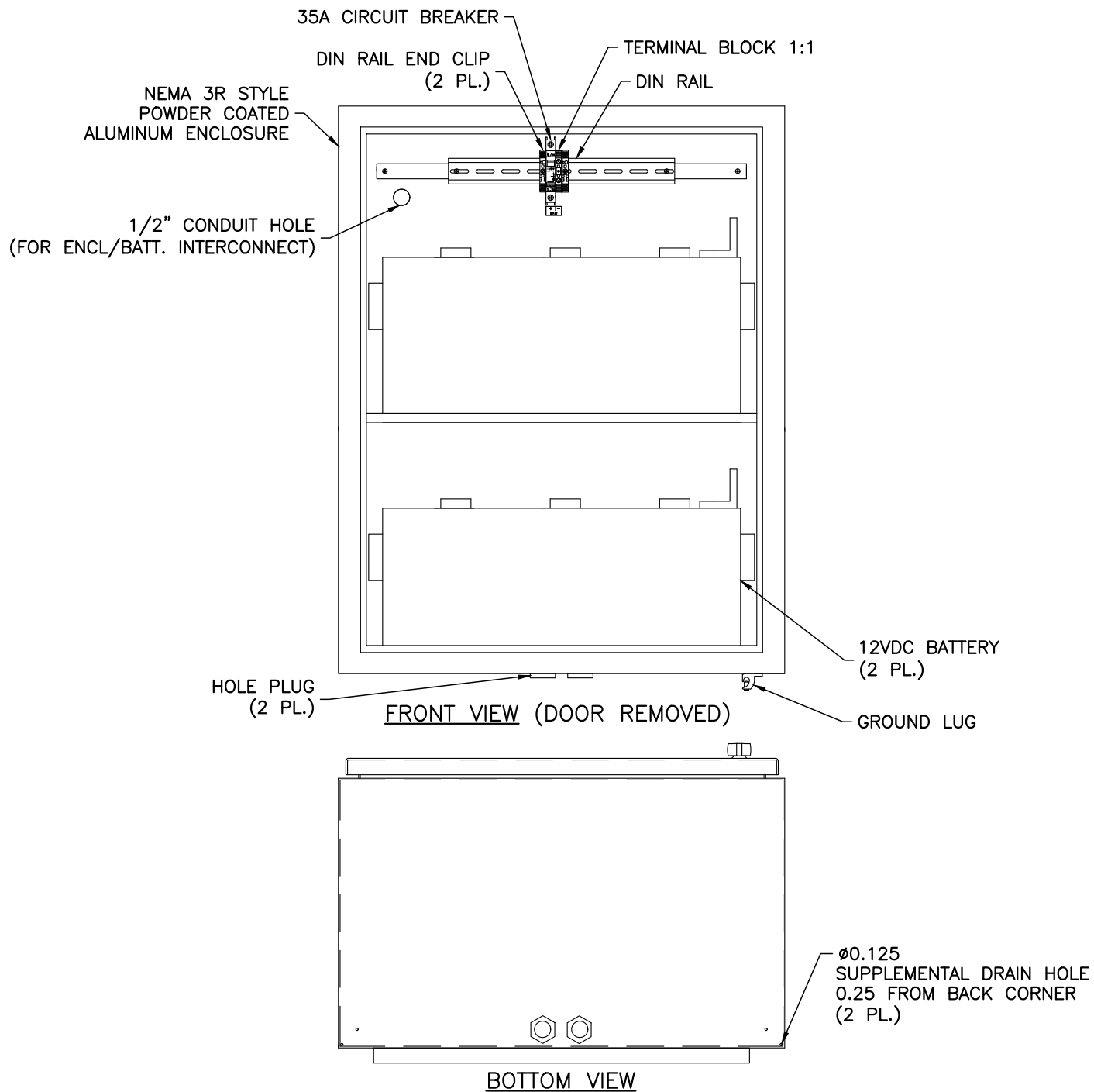


#### OWNERSHIP

COPYRIGHT ©2024 THE ABOVE DRAWINGS, SPECIFICATIONS, IDEAS, DESIGNS, AND ARRANGEMENTS ARE AND SHALL REMAIN THE PROPERTY OF SOLAR ELECTRIC SUPPLY AND NO PART THEREOF SHALL BE COPIED, DISCLOSED TO OTHERS, OR USED IN CONNECTION WITH ANY WORK OR PROJECT OTHER THAN THE SPECIFIED PROJECT FOR WHICH THEY HAVE BEEN PREPARED AND DEVELOPED WITHOUT THE WRITTEN CONSENT OF SOLAR ELECTRIC SUPPLY. VISUAL CONTACT WITH THESE PLANS OR SPECIFICATIONS SHALL CONSTITUTE CONCLUSIVE EVIDENCE OF ACCEPTANCE OF THESE RESTRICTIONS.

ENCLOSURE 1 LAYOUT  
MAPPS 800-530-24-120

UNITS		DATE	
UNLESS OTHERWISE SPECIFIED: PRIMARY UNITS ARE: INCHES SECONDARY UNITS ARE: [mm]		28.FEB.24	
REVISIONS		APPROVALS	
REV	REVISED BY	DATE	NAME
			DRAWN E. RIVAS
			APPROVED -
MISC			
DRAWING NUMBER		SIZE	
SD50-0633-SES		A	
B.O.M. NUMBER			
SB50-0633			
SHEET 4 OF 5			



## OWNERSHIP

COPYRIGHT © 2024 THE ABOVE DRAWINGS, SPECIFICATIONS, IDEAS, DESIGNS, ARRANGEMENTS AND SHOWN HEREIN REMAIN THE PROPERTY OF SOLAR ELECTRIC SUPPLY AND NO PART THEREOF SHALL BE COPIED, DISCLOSED TO OTHERS, OR USED IN CONNECTION WITH ANY WORK OR PROJECT OTHER THAN THE SPECIFIED PROJECT FOR WHICH THEY HAVE BEEN PREPARED AND DEVELOPED WITHOUT THE WRITTEN CONSENT OF SOLAR ELECTRIC SUPPLY. VISUAL CONTACT WITH THESE PLANS OR SPECIFICATIONS SHALL CONSTITUTE CONCLUSIVE EVIDENCE OF ACCEPTANCE OF THESE RESTRICTIONS.

ENCLOSURE 2 LAYOUT  
MAPPS 800-530-24-120

UNITS  
UNLESS OTHERWISE SPECIFIED:  
PRIMARY UNITS ARE: INCHES  
SECONDARY UNITS ARE: [mm]

REVISIONS		
REV	REVISED BY	DATE

MISC			

[illegible]

A	DRAWING NUMBER
	SD50-0633-SE

SCALE	N	B.O.M. NUMBER
		SB50-0633

APPROVALS	NAME	DATE
DRAWN	E. RIVAS	28.FEB.24
APPROVED		

	A		
S	SIZE		

A