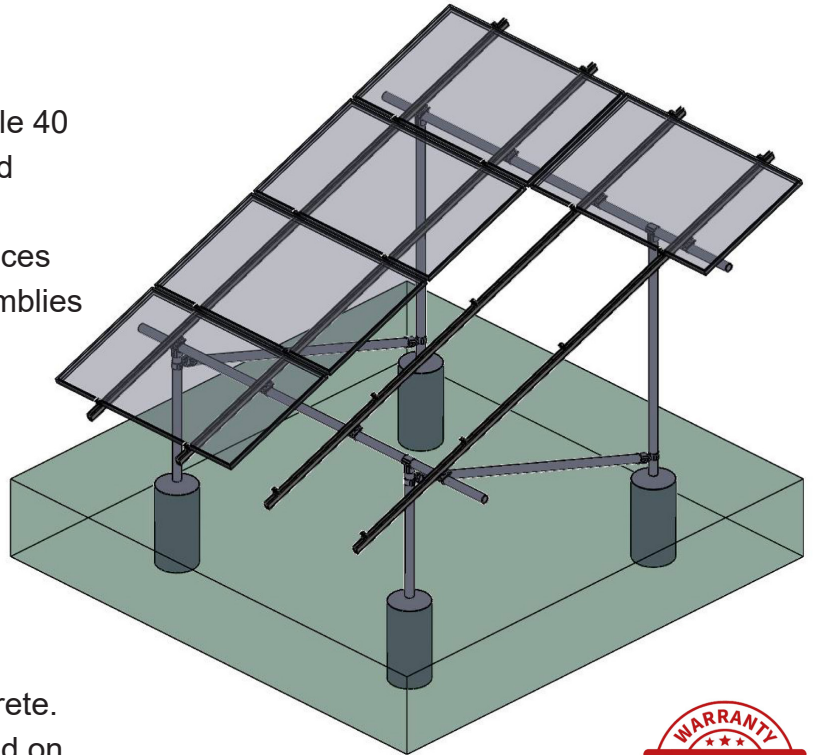




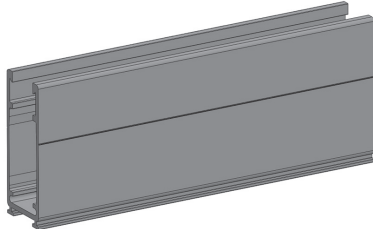
# GROUND MOUNT SYSTEM

- The Tamarack Ground Mount System is assembled using 3.1 rail with 2-inch schedule 40 or 80 galvanized steel pipe that is purchased separately.
- Use four 66-inch rails and two structural splices per column to create two 132-inch rail assemblies for 3 modules per column.
- Use four 93-inch rails and two structural splices per column to create two 186-inch rail assemblies for 4 modules per column.
- The maximum PV module width is 45-inches on 4 module columns and 43 inches on 3 module columns.
- The system comes with all parts needed except for the 2-inch pipe and concrete.
- Assembly is quick and easy and can be used on almost any terrain.



- ☑ **Simple Design** - Arrays can be in columns of 3 or 4 module high and any width required
- ☑ **Easy to install** - No welding or drilling and two wrench sizes fit all fasteners
- ☑ **UL 2703 Listed** - All components meet the UL 2703 standards for bonding and grounding
- ☑ **PE Certified** - Pre-stamped engineering letters available for most states
- ☑ **Easy to configure** - Unlimited system size with tilt angles from 0 to 45 degrees
- ☑ **Visually Appealing** - Simple to adjust for perfect alignment, even if the surface is irregular
- ☑ **Simple Wire Management** - PV cables and wiring for module-level electronics fits inside rails to avoid time-consuming wire management
- ☑ **Extremely Robust** - For use in locations with wind speeds up to 170 MPH and ground snow loads of up to 70 PSF

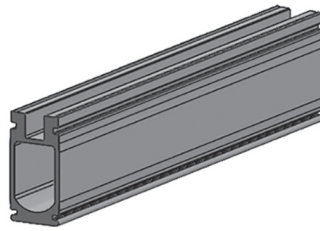
# Tamarack's Ground Mount makes it easy and economical to install a PV system on any surface



### 3.1 Mill Finish Rail

Our 3.1-inch heavy duty rail provides great performance with extreme wind and snow loads.

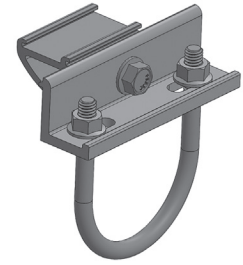
90453 66-inch 8-Rail Pack  
 90460 66-inch 144-Rail Pallet  
 90545 93-inch 8-Rail Pack  
 90552 93-inch 144-Rail Pallet



### 3.1 Structural Rail Splice

Quickly splice and bond 3.1-inch rail sections. Top Clamps can be co-located with splice. Wires and connectors can be run through opening.

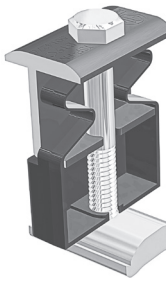
89556 Box of 6 w/channel nuts and bolts



### Pipe Mount Adapter

Securely mount the rail to the horizontal 2-inch pipe. U-bolts are included.

88955 8-Pack



### 50-50 Bonding Clamp

One clamp can be used as a mid-clamp or an end-clamp on modules with 30 mm to 40 mm frame height.

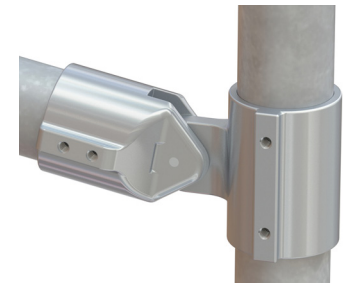
88450 12-Pack



### Aluminum T-Fitting

Connect vertical 2-inch pipe to horizontal 2-inch pipe.

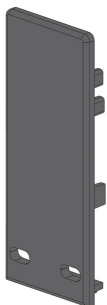
89761 1-Pack



### Swivel T-Fitting

Use for wind cross-bracing front to back vertical posts.

89778 1-Pack



### Push-On End Cap

Gives the installation a finished look and keeps insects from nesting in the rails.

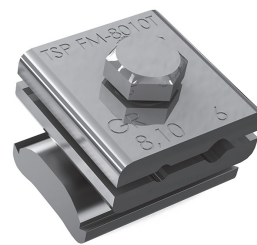
89846 8-Pack



### Module Lead Clip

Pushes into top of rail to keep cables in place.

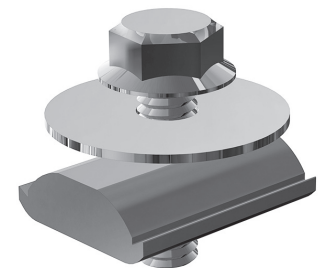
88747 24-Pack



### Ground Lug

Use one per module column to ground rail with bare 6 to 10 AWG copper wire.

88504 8-Pack



### MLPE Adapter

Use for mounting microinverters and optimizers on the rails under the solar modules.

88481 12-Pack