

# HiQ Solar TrueString 208V Inverter

## Installer Benefits



### What is it?

- 5.75 kW, 3-phase 208V string inverter
- Non-isolated inverter for use with ungrounded DC systems
- Manages two strings of modules, with independent MPPT and monitoring
- 1,000 and 600V<sub>dc</sub> compatible
- NEC 690.11 arc-fault compliance greatly reduces risk of fire

### Ideal for

- Rooftop solar, carports
- Retrofits where space is difficult
- Desert and coastal installations, hostile environments with sand, heat, salt, high elevations

### Easy to design with

- True 3-phase, no phase balancing required
- Place anywhere - under-module, bolt to racking (no reinforcement required), ballast mount
- Doesn't require concrete pad, wall space, room inside building
- Silent, no fans
- Can be placed out of reach of the general public
- Unbalanced strings tolerated
- NEC 2014 Rapid Shutdown made easy
- Multiple inverters can be connected to a single branch circuit, reducing wiring and OCPD costs
- High efficiency gives maximum harvest and reduced cooling requirements

*Units may be tucked away discretely just about anywhere*



*Waterproof design is small, light enough to carry, and robust (that's a tire with a Subaru attached to it below)*



## Robust

- NEMA6, sealed, waterproof
- All aluminum housing
- No electrolytics means usable at high elevations



## Easy to install

- Easy to lift onto a roof with one person (unit is 24 lb.)
- Transformerless, suitable for ungrounded systems
- No need to bolt electronics to every module
- Easy to wire, standard system wiring
- No DC or AC disconnects required - connectors certified as the means of disconnect saves hardware and labor costs
- No expensive conduit runs to a large inverter
- No combiner boxes required
- Reduced wiring costs
- Lower cost labor
- Maintenance-free

## Easy to Commission

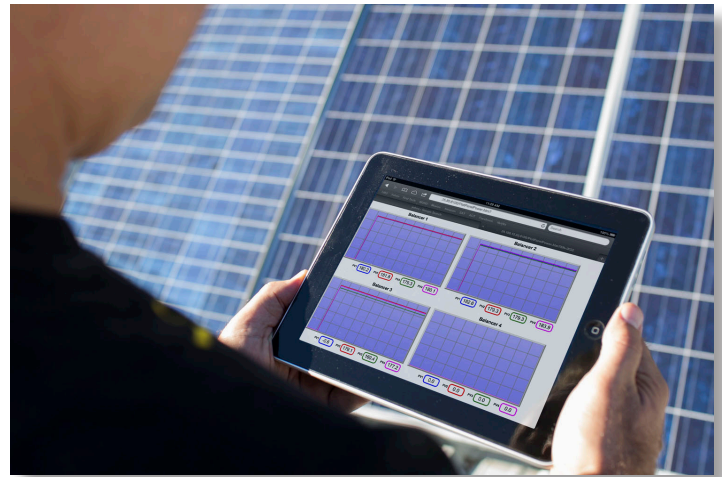
- Fast Gateway auto-discovery of new hardware
- Easy to check strings for mis-wiring, performance issues - every string is monitored, direct read-out of voltages

## Comprehensive monitoring

- Touch-screen Gateway connects into 120V<sub>AC</sub> branch circuit
- Gateway communicates over power lines using proprietary technology, translates into no extra wiring and no wireless blind spots etc.
- Optional RS485 Modbus<sup>®</sup> interface

## Easy to troubleshoot

- Once the Gateway is installed, fast updates and per-string monitoring make it easy to quickly identify under-performing modules, faulty connectors etc.
- Fast plug & play unit swaps, easy sparring



*System health is easy to see as soon as the Gateway is connected to the Internet, with rapid auto-discovery of new hardware and real-time updates*

*Powering on, arc fault reset and other functions settable from the inverter directly if desired*

